

REV	DATE	ID	DESCRIPTION
0.0	11-Mar-04	EW	Original Drawing from 199-004
0.1	26-Mar-04	EW	Various Characteristic Change
0.2	15-May-09	RS	Added tolerance to flange
0.3	June , 09	RS	Updated Case tolerance

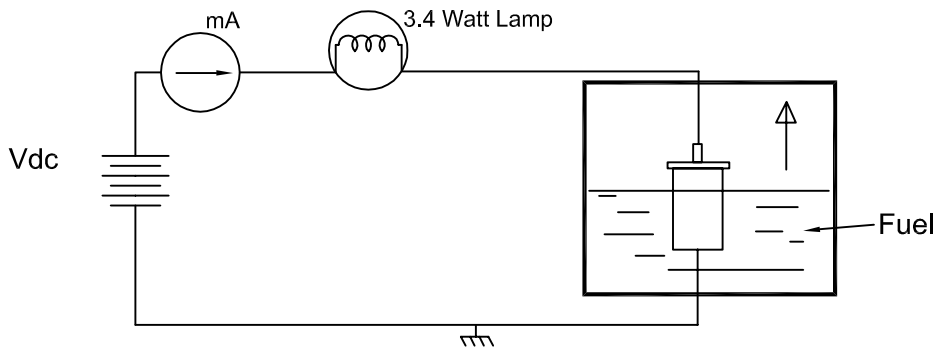
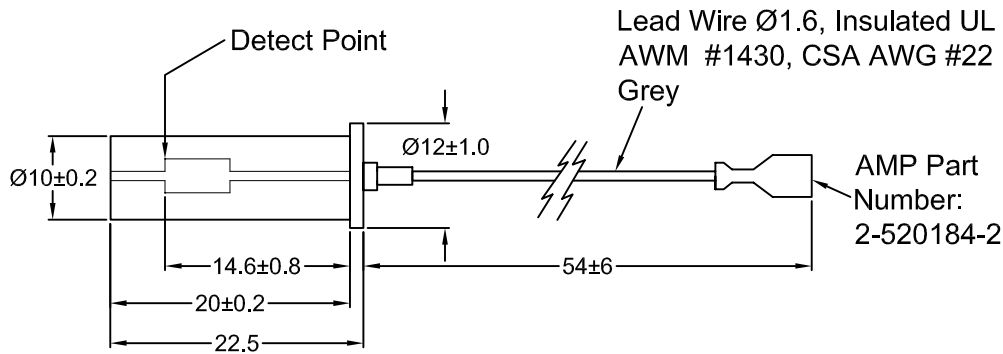
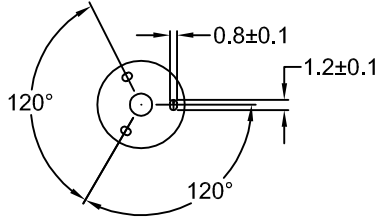


Figure 1

Electrical Characteristics	
Zero Power Resistance @ 25°C:	750 to 1100Ω
Operating Voltage/Power:	11 to 15 V _{DC} / 3.4 W
Lighting Test:	In cold air @ -10°C and 11V _{DC} . Arrival time to 135mA is 3 minutes maximum.
Functional Test: (See Figure 1)	In gasoline @ 60°C and 14.5V _{DC} . Current less than 60mA.
Cycle Test:	In gasoline @ 14V _{DC} for 1 minute then in air for 3 minutes. 2500 Cycles
Detect Point Test:	14.6 +/- 0.8 mm
Mechanical Characteristics:	
Lead Wire Pull Test:	Minimum of 50N
Shock and Vibration:	Tested as per JIS-D-1601 1-A
Applicable Fuel:	Regular or Premium Unleaded Gasoline

Notes:

All dimensions in mm

		FUEL SENSOR for UNLEADED REGULAR or PREMIUM GASOLINE	
SIZE A	DRAWN BY EW	PART No. TS-91819-HD	
SCALE N/A	DATE 5-June-09	SHEET 1 of 1	
REV 0.3	DWG No. / FILE		DB04-018