

CPTC Thermistors



CE Series High Voltage SMD PTC Thermistor

Typical Applications

- Overcurrent Protection for Communication Equipment
- ADSL
- PBX Exchange
- MDF (Main Distribution Frame) Modules

Features

- Surface Mount Device
- Small Size
- High Voltage
- Lead Free

Specifications

Part Number	Resistance @ 25°C ($\Omega \pm 20\%$)	Maximum Voltage (V _{AC})	Hold Current I _H (mA)	Trip Current I _T (mA)	Ref. Curie Temperature (°C)
CE3-8R0-221SM1B	8	220	140	280	90
CE3-100-251SM1B	10	250	120	240	90
CE3-150-251SM1B	15	250	100	220	90
CE3-200-301SM1B	20	300	120	250	120
CE3-300-301SM2B	30	300	70	140	80
CE3-400-381SM2B	40	380	60	140	80
CE3-500-381SM2B	50	380	60	140	80

Notes:

Maximum Voltage = Maximum voltage the device can withstand without damage.

Hold Current = Maximum current the device will conduct without interruption at 25°C in still air unless otherwise specified.

Trip Current = Minimum current at which the device switches from low resistance to high resistance at 25°C in still air unless otherwise specified.

Product Dimensions (mm)

Part Number	A Max	B Max	C Max	D Typ	Figure
CE3-8R0-221SM1B	8.1	4.0	11.5	4.2	1
CE3-100-251SM1B	8.1	4.0	11.5	4.2	1
CE3-150-251SM1B	8.1	4.0	11.5	4.2	1
CE3-200-301SM1B	8.1	4.0	11.5	4.2	1
CE3-300-301SM2B	8.1	6.5	11.5	4.2	2
CE3-400-381SM2B	8.1	6.5	11.5	4.2	2
CE3-500-381SM2B	8.1	6.5	11.5	4.2	2

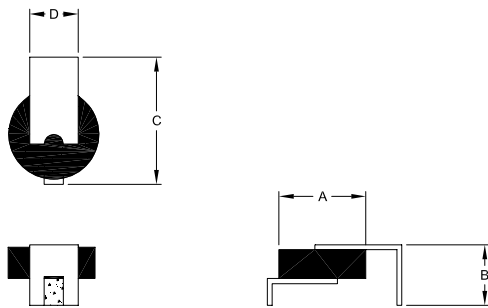


Figure 1: Single SMD

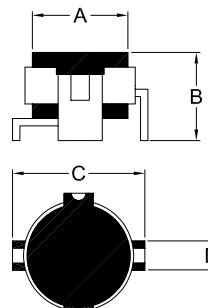


Figure 2: Double SMD



Stetron - USA
 ☎: 716-854-3443
 Fax: 716-854-3448

Web site: www.stetron.com
 ✉: thermistors@stetron.com

Stetron - Canada
 ☎: 905-475-6202
 Fax: 905-475-1926

Special Conditions

Part Number	Over Current ($\Delta R\% \leq 10\%$)	Surge Current ($\Delta R\% \leq 30\%$)	Power Induction ($\Delta R\% \leq 20\%$)	Failure Mode no arcing or burning
CE3-8R0-221SM1B	Note ¹	Note ³	-	-
CE3-100-251SM1B	Note ¹	Note ³	-	-
CE3-150-251SM1B	Note ¹	Note ³	-	-
CE3-200-301SM1B	Note ²	Note ³	-	-
CE3-300-301SM2B	Note ²	Note ⁴	Note ⁶	Note ⁷
CE3-400-381SM2B	Note ²	Note ⁵	Note ⁶	Note ⁷
CE3-500-381SM2B	Note ²	Note ⁶	Note ⁶	Note ⁷

Notes - CPTC Special Conditions

Note¹: 220V, 2A, 30min

Note²: 250V, 3A, 60s on, 600s off, 10 times

Note³: 10/310 μ s, 1.0kV, 3 min off, 10 times

Note⁴: 10/750 μ s, 1.0kV, 1min off, 30 times

Note⁵: 10/750 μ s, 1.5kV, 1min off, 30 times

Note⁶: 600V, R_S 600 Ω , 1s on, 60s off, 10 times

Note⁷: 380V, R_S 10 Ω , 30min

Part Number Code

	<u>CE</u>	<u>3</u>	<u>-</u>	<u>100</u>	<u>-</u>	<u>251</u>	<u>SM</u>	<u>1B</u>
	1	2	3	4	5	6		
1. Series Code: CE Series								
2. Body Type: 3 = Bare Disc								
3. Resistance @ 25°C ($\Omega \pm 20\%$): 2 significant digits + multiplier e.g: 10 Ω = 100								
4. Max. Voltage (V_{AC}): 2 significant digits + multiplier e.g: 250V = 251								
5. Leads: SM = SMD								
6. Control Code: 1B = Single SMD 2B = Double SMD								

Note: The information contained in this catalog has been carefully reviewed and is believed to be accurate. However, due to the possibility of unforeseen inaccuracies, no responsibility is assumed.



Stetron - USA
 ☎: 716-854-3443
 Fax: 716-854-3448

Web site: www.stetron.com
 ✉: thermistors@stetron.com

Stetron - Canada
 ☎: 905-475-6202
 Fax: 905-475-1926