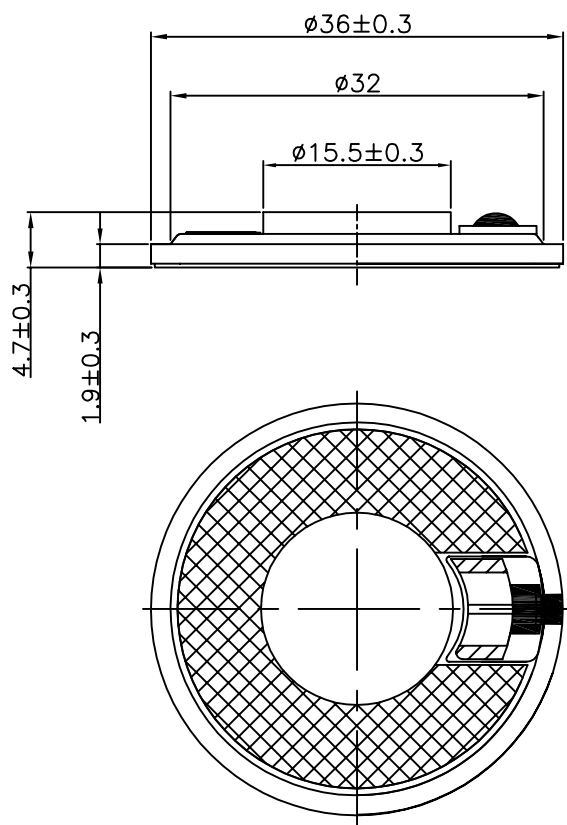
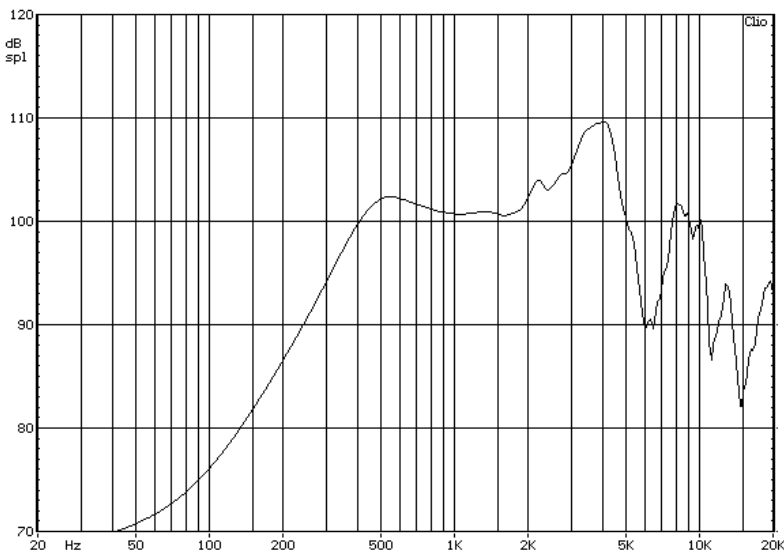


REV	DATE	ID	DESCRIPTION
0.0	15-Sep-09	RS	Original Drawing
0.1	2-Dec-09	RS	Updated THD



PRELIMINARY SPECIFICATION

Typical Frequency Response



ITEM	SPECIFICATION	REMARKS
1	Dimensions	36 Outside Diameter
2	Impedance	4.0Ω±15% @ 1.5kHz/1V
3	Input Power	1W/1.2W Nominal/Max
4	Lowest Resonant Frequency, F ₀	500Hz ±20% Constant Voltage (1V RMS)
5	Output SPL	100dB ±3dB Measured 1.0W/0.1m @ (0.6/0.8/1.2/1.5kHz) Avg. Using IEC 268-5 Baffle.
6	Total Harmonic Distortion	Max.5% 1kHz @ 1W/0.1m
7	Effective Frequency Range	F ₀ to 4kHz See typical frequency response
8	Magnet Dimension	Φ12.5 x 1.5 mm OD x H

TESTS

9	Operation Test	White noise of 1W is applied for 96h.	The speaker must meet items 4 to 6 after test
10	Max. Input Power	The speaker shall be exposed to white noise of 1.2W for 1min.	
11	Buzz Test	2.0Vrms applied from F ₀ to 4kHz	There shall be no extraneous noise
12	Polarity	A positive DC current is applied to the terminal marked +	The diaphragm shall move forward
13	Drop Test (in box)	Speakers properly packaged in their shipping carton are dropped on each side of the carton except the top from a height of 80cm (carton GW≤10kg) or 60cm (10kg<carton GW≤25kg)	There shall be no buzz/rattle and the part shall exhibit no physical damage (rivets, weld and glue must hold, no scratches or burrs on surfaces and no peeling of paint/coating)
14	Low Temperature Exposure	The speaker shall be exposed to -25 ±2°C, 50%RH for 96h with a 1h rest at room temperature.	The speaker must meet items 5 to 6 after test
15	High Temperature Exposure	The speaker shall be exposed to 80 ±3°C, 50%RH for 96h with a 1h rest at room temperature.	
16	Humidity Exposure	The speaker shall be exposed to 40±3°C, 90%RH for 96h with a 1h rest at room temperature.	

NOTES: All dimensions in mm.
QB09090-V1; RoHS Compliant



Stetron International Inc.

LoudSpeaker Specification
36mm, 4.0Ω, Mylar cone
1W, RoHS

The Drawing and Information contained on this sheet are confidential and proprietary to Stetron International Inc. Reproduction through any means is prohibited and the information contained herewith shall not be used either in whole or in part without the written consent of Stetron International Inc.

SIZE	DRAWN BY	PART No.
A	RS	U0036004NMP17AR
SCALE	DATE	SHEET
N/A	02-Dec-09	1 of 1
REV	DWG No. / FILE	
0.1		DB09-032